

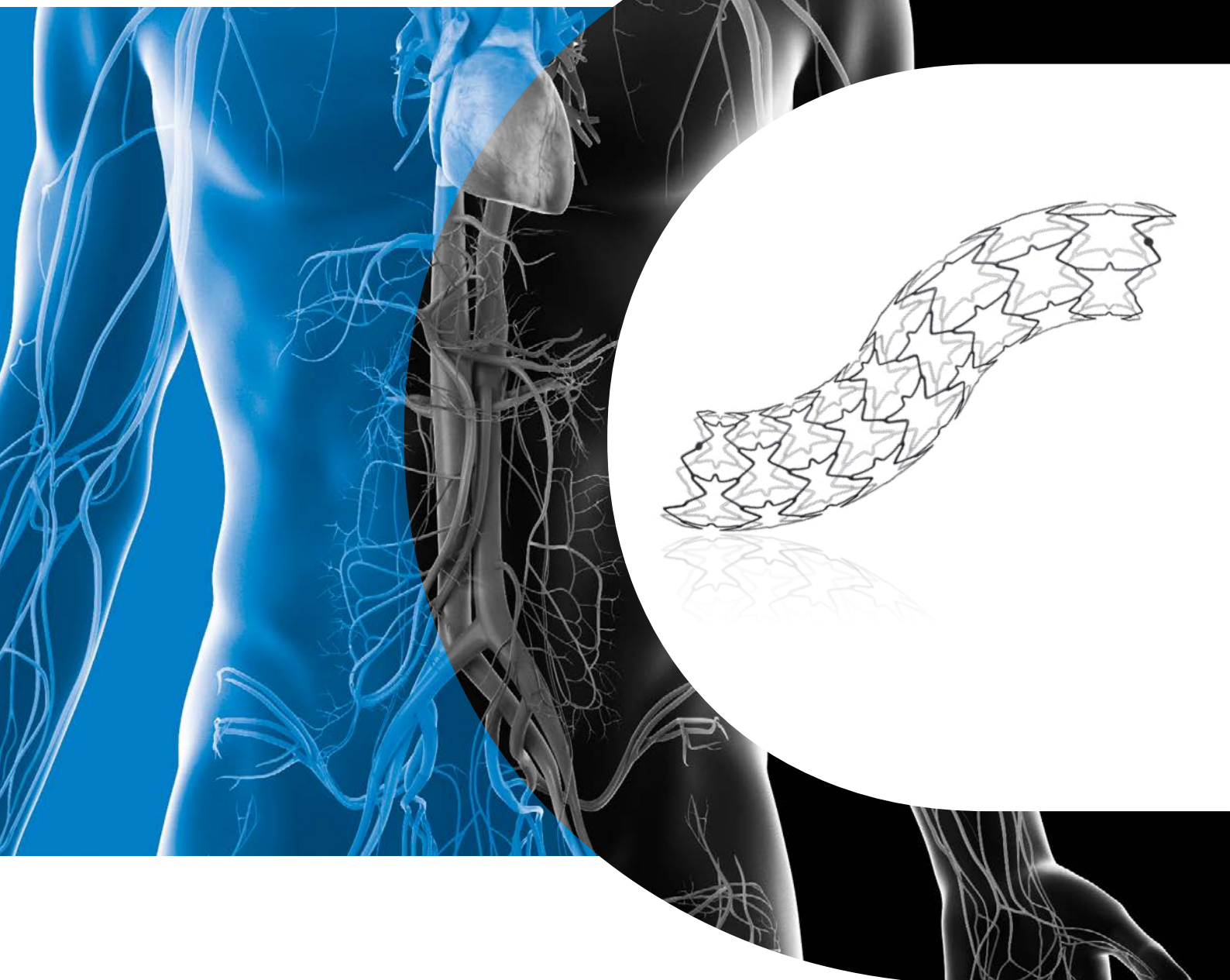


# Radix2

RENAL BALLOON EXPANDABLE STENT

Arterijų stentai, užmauti ant  
baliono (pre-mounted - angl.),  
inkstų arterijų stentavimui

E N D O V A S C U L A R

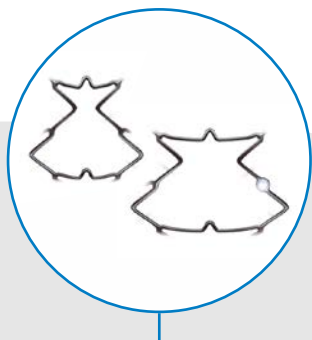


EXCELLENT PROXIMAL SCAFFOLDING  
AND GOOD DISTAL FLEXIBILITY  
THANKS TO THE UNIQUE PROGRESSIVE  
CLOSE CELL DESIGN

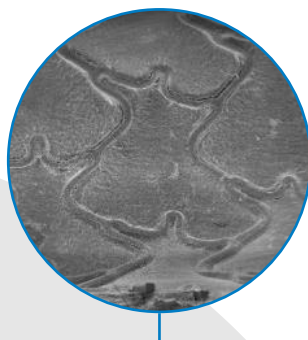
CARBOFILM COATING ACCELERATES  
ENDOTHELIALIZATION, REDUCES  
THROMBOGENICITY AND SEALS  
AGAINST HEAVY METAL IONS RELEASE

PLATINUM MARKERS AND NO  
STENT FORESHORTENING ALLOW  
UNMATCHED PLACEMENT AND  
VISUALIZATION ACCURACY

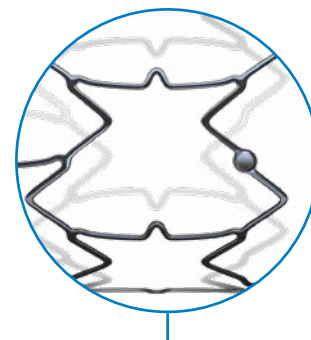
## UNIQUE FEATURES



Excellent proximal scaffolding and good distal flexibility thanks to the unique progressive closed cell design



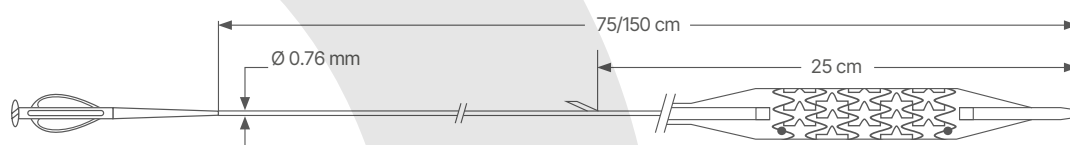
Carbofilm coating accelerates endothelialization, reduces thrombogenicity and seals against heavy metal ions release



Platinum markers and no stent foreshortening allow unmatched placement and visualization accuracy

stentas specialios konstrukcijos su sustiprinta (storesne) proksimaline ir plonesne distaline dalimi

## TECHNICAL DATA



balioninio kateterio galiukas - specialiai modifikuotas - nusmailintas, palengvinantis sistemos prastūmimą pro stenozę

CATHETER SPECIFICATIONS	
Category	Rapid Exchange Balloon delivery system
Introducer Sheath compatibility	5F <b>balioninio kateterio skersmuo - ne didesnis nei 5F</b>
Guiding catheter compatibility	6F <b>naudojami su 0.018" vielomis</b>
Guidewire compatibility	0.018" <b>aukšto spaudimo, nominalus spaudimas - ne mažesnis nei 8 atm</b>
Usable catheter length	75 - 150 cm
Nominal Pressure	8 atm
Rated Burst Pressure	10 - 12 atm

įvedimo sistemos naudojamas ilgis - ne mažesnis nei 75 cm

STENT SPECIFICATIONS	
Category	Carbofilm Coated Balloon Expandable BMS
Material	Stainless Steel AISI 316 LVM
Strut Coating	Carbofilm
X-ray visibility	Two dot Platinum markers at stent ends
Foreshortening	Zero foreshortening during stent expansion

stento diametras - nuo 5,00 mm iki 7,00 mm, ilgis nuo 12 mm iki 17

## ORDER INFORMATION

USABLE CATHETER LENGTH	Ø (mm)	L (mm)		
			12	17
75 cm	5		ICRW5012S	ICRW5017S
	6		ICRW6012S	ICRW6017S
	7		ICRW7012S	ICRW7017S
150 cm	5		ICRW5012L	ICRW5017L
	6		ICRW6012L	ICRW6017L
	7		ICRW7012L	ICRW7017L



Manufactured by  
**CID S.p.A.**  
 Via Crescentino snc  
 13040 Saluggia (VC) ITALY  
[www.cidvascular.com](http://www.cidvascular.com)

Please contact your local sales representative for product availability. The images shown within this document are of a purely illustrative nature and are not intended to depict reality. Please consult product labels and package inserts for indications, contraindications, hazards, warnings, cautions and instruction for use.